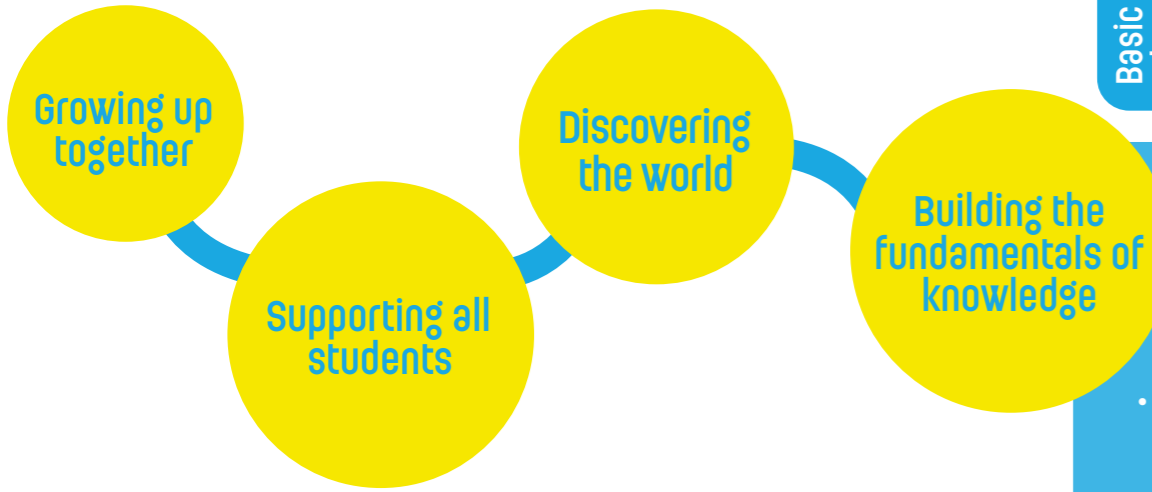


The first stage of the primary school is intended for children from 6 years and up and comprises five levels: CP, CE1, CE2, CM1 and CM2.

Its main aim is to teach children fundamental skills, namely reading, writing and counting. However, artistic and playful activities and the development of skills are still important, especially at the lower levels.

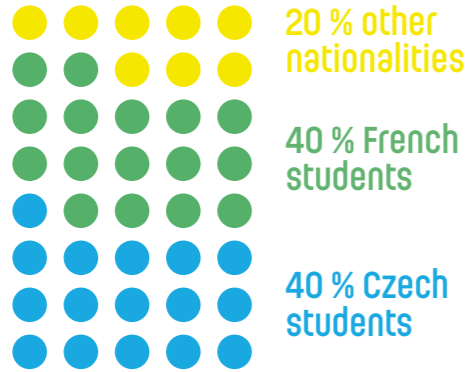


306 students

17 teachers

40 nationalities

Up to 3 languages taught

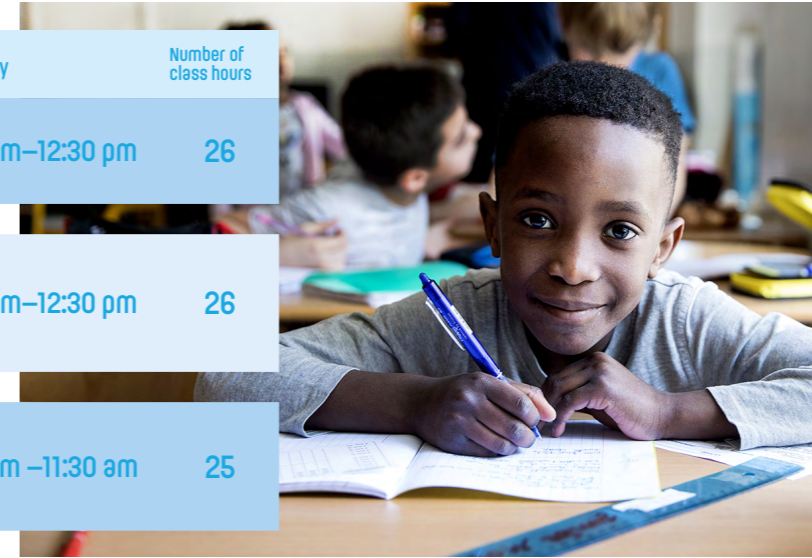


	age		
Consolidating students' knowledge	10 yr	5th year of Cours moyen 2	CM2
	9 yr	4th year of Cours moyen 1	CM1
Basic education	8 yr	3rd year of Cours Élémentaire 2	CE2
	7 yr	2nd year of Cours Élémentaire	CE1
	6 yr	1st year of the Cours préparatoire	CP



Timetable

Monday, Tuesday, Thursday, and Friday	Wednesday	Number of class hours
08:30 am – 12:15 pm 1:15 pm – 3:00 pm	08:30 am–12:30 pm	26
08:30 am– 11:40 am 12:40 pm–3:00 pm	08:30 am–12:30 pm	26
08:30 am–11:40 am 12:40 pm–3:00 pm	08:30 am –11:30 am	25



National educational programmes prescribe what knowledge and skills need to be attained and set the curriculum for the given year so that students can progressively develop in each area of education:

- **mastering spoken French:** oral expression, reading, writing, literature and study of the French language (grammar, spelling, vocabulary, conjugation);
- **humanities education:** life in community, history, geography, training in a foreign language or a regional language;
- **humanities:** mathematics, experimental sciences, technology and information technology;
- **physical education and sport;**
- **art, music, visual arts;**
- **civics or "living together".**

Tuition is provided by a team of polyvalent teachers. These individuals **support all of their students**, especially those who are having difficulties at school. Their help is tailored to the individual needs of the students for the benefit of everyone's school results.

Teachers' regular grading of their students allows for continuous evaluation of the degree to which they are mastering the coursework, and their level of proficiency. They contribute to an assessment of the objectives of mastering the **common foundations of knowledge and skill**. The results are notified to families, including, inter alia, via an electronic grade book, to facilitate the necessary dialogue, and to monitor children's compulsory school attendance. At the beginning of the school year, informative class meetings are held separately for each grade and then throughout the year in line with the relevant rules.

In addition, pupils are invited to use a range of **pedagogical projects** organised at the level of each grade by teachers: mathematical and scientific challenges, competitions and projects in the French language, meet-ups with authors of literature aimed at young people, educational trips, sports or thematic visits.

An Elementary day

Each class has its own classroom for the entire school year.

Routines

These are organised in the morning or during the day. This time in the student community allows students to participate in activities. They are an integral part of tuition.

Duration of tuition

Tuition takes place either in a large group or in small groups. Frequency is an important factor: repetition and regularity are essential to retaining the knowledge that students have acquired.

Groups

This time in the class community enables students to discover activities and talk about their school work and procedures, as well as about their emotions.

Breaks

During the break, students can go out into the open air, take advantage of the school's other areas and invent games. The yard has various areas suitable for children's needs.

Lunch (11:40 AM-12:15 PM)

Children who sign up for lunch in the school canteen are always taken there in small groups by the person supervising them.



Language teaching programmes at the LFP

The French Lycée in Prague offers various language teaching programmes in French, Czech, and English, which are taught by teachers of French, English, and Czech, who are all native speakers.

Tuition is organised according to two methods.

1 Study with a predominance of French and with tuition in Czech and English

2 Bilingual French-English study with an equal number of class hours in these languages, and with tuition of the Czech language from the CP preparatory stage

An International British section from CM1 year

Lesson timetable

The inclusion of a child into one of these types of study when s/he starts at the LFP depends on the language profile of the family and the child's abilities.

Year		French section			French-English section		International British section		
		FR	EN	CZ	FR	EN	FR	EN	CZ
1. (CP)		22	1	2	11,5	11,5			
2. (CE1)		22	2	2	12	12			
3. (CE2)		22	2	2	12	12			
4. (CM1)		22	2	2			18	6	2
5. (CM2)		22	2	2			18	6	2

Why should you choose the LFP?



A spacious building, equipped and adapted to the needs of classes in each age category

- Ideal location in the centre of Prague with very good transport links.
- Sports facilities on site (gym, football field).
- Premises designed for individual types of tuition (room for information technology, documentation centre, music room, etc.).



A multilingual education

- Diversified educational programme in French, Czech, and English.
- Option of fully bilingual tuition.



A school that allows Czech students to develop their mother tongue

- Czech language tuition.
- Use of their mother tongue during their education.



Qualified teachers

- French teachers are trained to teach at all levels of primary school.
- Teachers teaching the individual foreign languages are native speakers.



Sports and Cultural Club (CSC)

- A dynamic parents' association holding various after-school activities in French at the school grounds.

Contact details

The LFP team is pleased to welcome you daily from 9 a.m. to 5 p.m.

For enrolment in the first stage of primary school:

Secretariat for primary school

Tél : (+420) 222 550 001
Email : secretariat.primaire@lfp.cz

You can peruse the enrolment conditions and tuition fees for the current year at :
www.lfp.cz

You can request a meeting with the school's management team at: secretariat@lfp.cz

French Lyceum in Prague
Drtinova 7, 150 00 Praha 5
(+420) 222 550 000
www.lfp.cz



Elementary (6-10 years old)



 Lycée
Français
de Prague