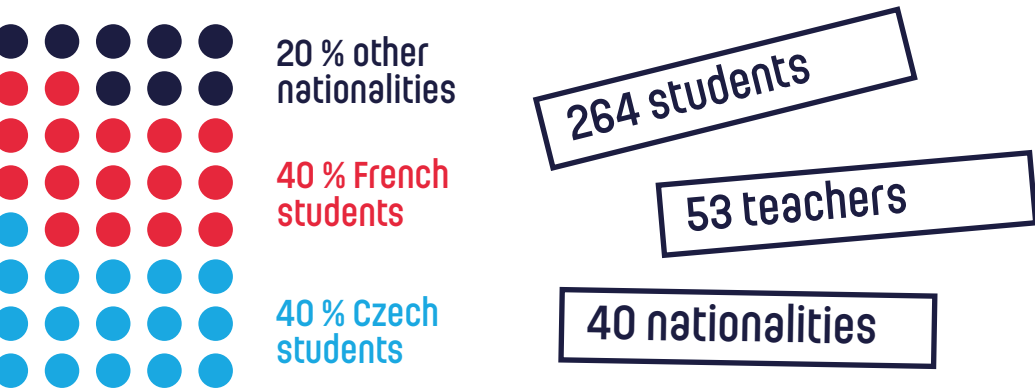
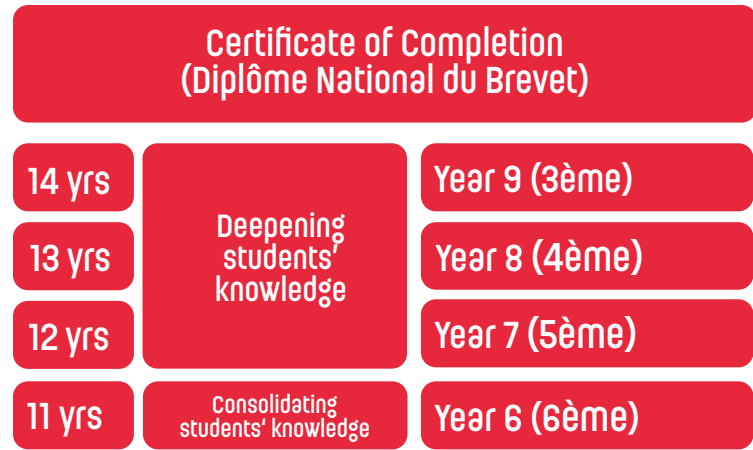


After completing the five-year Elementary school (1st level ), students enter **Middle school (2nd level)**



100% success rate at the second-level final exams (Brevet) in 2021 !

Approximately 264 students attend the second level of the LFP Primary School, being divided into 13 classes, of which two are reserved for non-French-speaking students.

With the exception of these **two integration classes**, all other classes from the sixth through to the third year are approved by the French Ministry of Education. The tuition at the second level aims to provide Common Knowledge and Cultural Foundations, which represent a whole collection of knowledge, skills, values, and conduct for students required to **successfully complete their compulsory schooling, for their personal lives and their lives as a future citizen.**



**Sixth year: a year for consolidating students' knowledge**

As regards to students embarking on their sixth year, special attention is paid to their **adaptation to tuition at the middle school.**

6th class allows students to become accustomed to the organisation and life at middle school, but also builds on what they learned in CM1 and CM2 classes.

The aim of the 6th year is to deepen the basic knowledge acquired at elementary school and to evoke students' interest in the subjects and methods of the middle school.

**Years 7, 8 & 9 (5ème, 4ème, 3ème): three years devoted to deepening students' knowledge**

The aim is to enable students to develop their knowledge in the individual subjects and in multidisciplinary programmes.

Particular attention is paid to developing a student orientation project as part of the Future (Avenir) programme.

An educational programme focused on health, arts and cultural education programme and civics offers students a framework that will help them to build the necessary knowledge besides a wide range of new knowledge and new technologies, namely digital. **Informatics education** adapts to the needs of each student and enforces knowledge acquisition. It also nurtures the **responsible use of the Internet and social media.**

### Weekly school schedule In the 6th year

Subjects	6ème
Physical education	4
Art	1
Music	1
French	4,5
History-Geography Civics	3
English or German	4
Czech	3
Mathematics	4,5
Natural history, technology, physics and chemistry	3,5

\*2nd foreign language tuition starts in the 7th year (5ème)

### In the 7th, 8th and 9th year (5ème, 4ème, 3ème)

Subjects	5ème	4ème	3ème
Physical education and sport	3	3	3
Art education	1	1	1
Music education	1	1	1
French	4,5	4,5	4
History-Geography	3	3	3,5
First modern language English or German	3	3	3
*Second modern language English, German or Spanish	2,5	2,5	2,5
Czech	2 comp.	2 opt.	2 opt.
Mathematics	3,5	3,5	3,5
Natural history	1,5	1,5	1,,5
Technology	1,5	1,5	1,5
Physics-Chemistry	1,5	1,5	1,5
Classical languages and culture, Latin (optional)	2	2	2

### International British Section (SI)

LFP offers its students an International British Section, which provides a high quality pedagogical and didactic framework for integrated language and cultural education. It is suitable for building a bilingual and multilingual knowledge and to develop true intercultural behaviour in students. Prior to embarking on this section, it is important to consider the level of the student's language skills, his/her interest in the English language and English culture, his/her ability to take on extra course work and his/her personal motivation. The pupils in the international section can take in their troisième year the British international option for the DNB examination.

### Weekly tuition and schedule of the SI

Physical education	4
Art	1
Music	1
French	4,5
History-Geography Civics	2
History-Geography in English	2
English	4
English, language and literature	4
Czech	3
Mathematics	4,5
Natural history, Technology, Physics and Chemistry	4



French Lyceum in Prague  
Drtinova 7, 150 00 Praha 5  
(+420) 222 550 000  
www.lfp.cz

## Certificate of Completion (Diplôme National du Brevet)

Students sit a final exam at the end of the 3rd year in order to obtain the Diplôme National du Brevet. Its attainment depends on them obtaining points (marks) during the course of the school year and in the final exams. This certificate validates the completion of the second level of their compulsory schooling. It certifies the level of knowledge attained according to the second-level curriculum.

### Evaluation:

A student will receive a certain number of points in each of the eight areas of Common Knowledge and Cultural Foundations. Points are awarded according to an assessment of the student's knowledge: insufficient knowledge (10 points); weak knowledge (25 points); satisfactory knowledge (40 points) and very good knowledge (50 points).

### Final exams:

- |   |  |
|---|--|
| → Written exam pertaining to the educational programme in French.<br>Duration: 3 hours (100 points)                         | (two exams from three subjects).<br>Duration: 1 hour (50 points)   |
| → Written exam pertaining to the educational programme in Mathematics.<br>Duration: 2 hours (100 points)                    | → Oral exam pertaining to one of the projects that the student compiled as part of the practical multidisciplinary educational of the 4th cycle.<br>Duration: 15 minutes (100 points)          |
| → Written exam pertaining to the educational programmes in History, Geography, and Civics.<br>Duration: 2 hours (50 points) | → For the pupils in the international section there are two supplementary oral tests: language and literature (20 minutes) and British history and geography (30 minutes) (50 points for each) |
| → Written exam pertaining to the educational programmes in Physics-Chemistry, Biology and Technology                        |  |



## Why should you choose LFP?



**A spacious building, equipped and adapted to the needs of classes in each age category**

- Ideal location in the central district of the city with very good transport links.
- Sports facilities on site (gym, football field).
- Premises designed for individual types of tuition (room for information technology, documentation centre, music hall, etc.)



**Qualified teachers**

- French teachers are trained to teach at all standards of the second level of primary school.
- Teachers teaching the individual foreign languages are native speakers.



**Sports and Cultural Club (CSC)**

A dynamic parents' association holding various after-school activities in French at the school grounds.



**Multilingual education**

- Diversified educational programme in French, Czech, and English.
- Option of fully bilingual tuition.
- A British international section.



**A school that allows Czech students to develop their mother tongue (the level is recognised by the Czech ministry of education)**

- Czech language tuition (compulsory up to the cinquième year).
- Use of their mother tongue during their education.

### Contact details:

The LFP team is pleased to welcome you daily from 9am to 5pm.

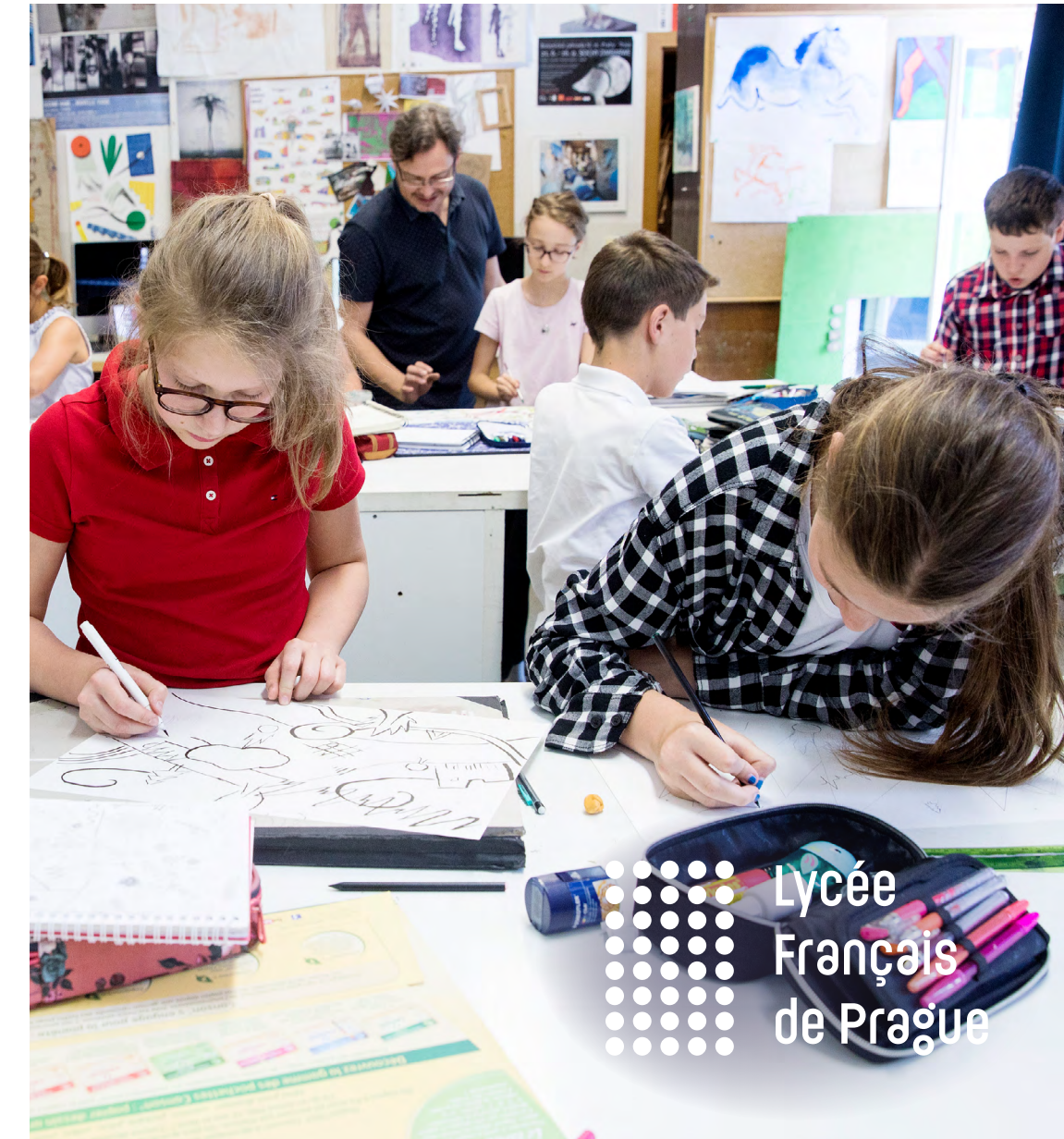
For enrolment in the middle school:

Secretariat for the middle school  
Tél : (+420) 222 550 000  
Email : secretariat@lfp.cz

You can peruse the enrolment conditions and tuition fees for the current year at: [www.lfp.cz](http://www.lfp.cz)

You can request a meeting with the school's management team at: [secretariat@lfp.cz](mailto:secretariat@lfp.cz)

## Middle School (11-14 years old)



 **Lycée  
Français  
de Prague**